

Surface, Texture

Garth Paine (30")

Violoncello: *sfz* full tone \rightarrow *p* increasing harmonics added to held note \rightarrow sul pont.

Flute: (1) \downarrow

Bass Clarinet 1: *cl.* *pppp* (2) \downarrow *carb.* *fade across stage*

Bass Clarinet 2: *spz* *TUTTI* (5) \downarrow *pppp*

Trumpet 1: *sfz* *mute slowly applied*

Trumpet 2: *closed* *open* *mute* *x2.5 repeat evenly*

Bassoon: *sfz* \rightarrow *p* \rightarrow *ppp*

Viola: *VIA* *molto vib.* (4) \downarrow *increase sul pont.*

Double bass: *DB* *sul pont.*

Percussion: *Bass Drum amplified* *sfz* (3) \downarrow *R. Ball* *ppp* *rubber ball*

2

Vc.

33"

1

sfz full tone *p* increasing harmonics added to held note

51"

5



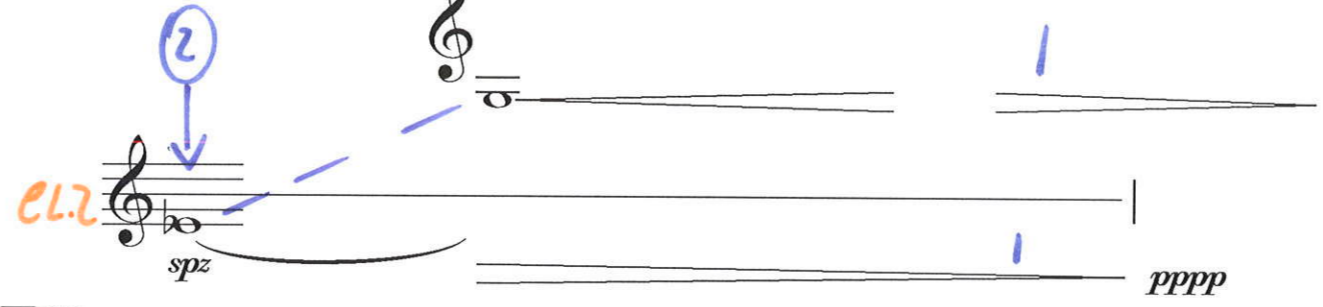
sul pont.

Fl.

Fz # *pp* breath
E/F trill keys randomly, slow

B. Cl. 1

B. Cl. 2

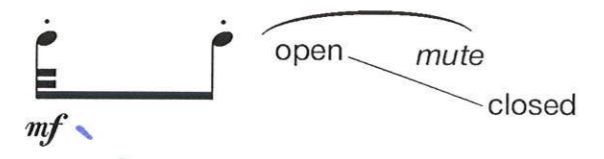


el.2

spz

pppp

Tpt. 1



Tpt. 2



Bsn.

Vla.

3

VLA

Db.

DB

4

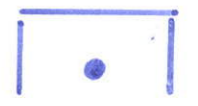
DB

sul pont.

Perc.

amplified *sfz*

Crotales



1:00 (1) Vc. γ

Fl. γ

B. Cl. 1 γ

B. Cl. 2 γ

Tpt. 1 γ

Tpt. 2 γ

Bsn. γ

Vla. γ

Db. γ

Perc. γ

1:08 (2) Fl. *spz*

Tpt. 1 *mute TA.1*

Tpt. 2 *mute TA.2 pp*

Db. *whispy sound*

Perc. *Bass Drum amplified sfz damp.*

1:18 (3) Vc. γ

Fl. *trill high E/F trill keys slowly*

B. Cl. 2 *el.2 spz*

Tpt. 1 *growl mute pp*

Tpt. 2 *growl mute pp*

Db. *sul pont. ppp*

Perc. *Vibraphone bow*

1:22 (4) Tpt. 1 γ

Tpt. 2 γ

Db. γ

Perc. *Crotales*

1:30 (5) Vc. γ *w/you*

Fl. γ

B. Cl. 2 γ

Tpt. 1 γ

Tpt. 2 γ

Db. γ

Perc. γ

ATTACCA SUB.

Detailed description: This is a handwritten musical score for a concert band. The score is organized into staves for various instruments: Vc. (Violin), Fl. (Flute), B. Cl. 1 & 2 (Bass Clarinet), Tpt. 1 & 2 (Trumpet), Bsn. (Bassoon), Vla. (Viola), Db. (Double Bass), and Perc. (Percussion). The score includes several time signatures and measures, with handwritten annotations in orange, purple, and blue. Key annotations include '1:00', '1:08', '1:18', '1:22', and '1:30', each enclosed in a box and accompanied by a circled number (1, 2, 3, 4, 5). Performance markings such as 'muted', 'pp', 'pppp', 'sfz damp.', 'whispy sound', 'sul pont.', and 'growl mute' are used throughout. A yellow bracket spans from 1:00 to 1:18, and a purple bracket spans from 1:08 to 1:18. A blue vertical line runs through the score, and a blue arrow points to the bottom right. The score concludes with 'ATTACCA SUB.' in purple.

4 1:33 1

Vc. molto sul pont.
f

Fl. ppp

B. Cl. 1

B. Cl. 2

Tpt. 1

Tpt. 2

Bsn.

Vla.

Db.

Perc.

Crotales
bow

Bass Drum
amplified
sfz damp.

Vibraphone
bow

Crotales
bow

p *tr.* *accel.* *rit.* *sf* *ppp* *sfz* *pp* *sf* *sfz*

1:50 ? 5

2

3

4

5

6

7

8

9

10

11

12

13

14

15

16

17

18

19

20

21

22

23

24

25

26

27

28

29

30

31

32

33

34

35

36

37

38

39

40

41

42

43

44

45

46

47

48

49

50

51

52

53

54

55

56

57

58

59

60

61

62

63

64

65

66

67

68

69

70

71

72

73

74

75

76

77

78

79

80

81

82

83

84

85

86

87

88

89

90

91

92

93

94

95

96

97

98

99

100

6

Vc. *f* *p* *ppp* sul pont. 2:45

Fl. *p* tr. accel. rit. *fz*

B. Cl. 1 × gurgling low frequency sound multiphonics *ppp*

B. Cl. 2 × gurgling low frequency sound multiphonics *ppp*

Tpt. 1 *Tr. 1*

Tpt. 2 *Tr. 2*

Bsn. *tr.* *p*

Vla. *whispy sound* *sf* *p* increase harmonics

Db. *ppp*

Perc. Crotales bow *crof.* *evol.*

2:15 ?

1

7

6

2

3

4

5

2:47

170

Vc. *f sfz sfz*

Fl. *p tr. mp PP*

B. Cl. 1 *tr. PP sf PP sf*

B. Cl. 2 *tr. PP sf PP sf*

Tpt. 1 *2 3 2 3 (3)*

Tpt. 2

Bsn.

Vla.

Db. *bounce 3*

Perc. *Crotales bow Bass Drum rubber ball sf*

increase sul pont.
accel.

select note where different keys
create same note, but different timbre

ATTACCA
SUBITO

355 ?

10

Vc.

Fl.

B. Cl. 1

B. Cl. 2

Tpt. 1

Tpt. 2

Bsn.

Vla.

Db.

Perc.

4:02

p

tr. lazy trill F/F# keys / tr 1 / tr 2 keys

uneven slow trill

fl. 5

2

pp

sf

3

DB

pp

sf

Crotales

bow

croi.

f

allow to ring

4:30?

4:33

Vc.
Fl.
B. Cl. 1
B. Cl. 2
Tpt. 1
Tpt. 2
Bsn.
Vla.
Db.
Perc.

The score includes the following elements and annotations:

- Vc.:** Starts with a glissando marked *f*. A purple bracket highlights the initial notes. A vertical dashed line is placed at the first measure of the triplet section.
- Fl.:** Features handwritten tempo markings: *♩ 110* (orange), *♩ 73* (orange), and *(♩ 110)* (orange). A blue circled *4* is written above the staff.
- B. Cl. 1 & 2:** Includes handwritten rhythmic patterns: purple vertical lines, a $\frac{2}{4}$ time signature, and a $\frac{3}{8}$ time signature. A green bracket spans across the triplet section.
- Tpt. 1 & 2:** Both parts include a trill (*tr.*) at the beginning of the triplet section, marked *f*.
- Vla. & Db.:** Each part has a double bar line with a repeat sign and a green *x4* annotation.
- Perc.:** Features a **Crotales** section with a bow and a *f* dynamic, with the instruction "allow to ring". A **Bass Drum** section follows with three notes marked with a downward arrow and the word "dampen".

→ $\frac{2}{4}$

5:34

1

5:54

1:46

slow, passionate

Vc.

Violin staff with notes and dynamics. Starts with a forte (*f*) dynamic. The music consists of a series of notes, some with accidentals, and a final triplet of notes.

Fl.

Flute staff with notes and dynamics. Starts with a mezzo-forte (*mf*) dynamic. The music consists of a series of notes, some with accidentals, and a final triplet of notes.

B. Cl. 1

4
4

B. Cl. 2

3
4

Cup horns part with two staves, each starting with a bass clef and the letters 'cu'. The notes are simple quarter notes.

(3)
(4)

Tpt. 1

Tpt. 2

Bsn.

1:40

Vla.

tremolo 3

Viola staff with a tremolo triplet of notes. The notes are beamed together and have a '3' above them.

Db.

tremolo

Double Bass staff with a tremolo triplet of notes. The notes are beamed together and have a '3' above them.

Perc.

Vibraphone

tremolo

perc

1:60

Percussion staff with a vibraphone tremolo triplet and other notes. The notes are beamed together and have a '3' above them.

slow, passionate

f

mf

B. Cl. 1

B. Cl. 2

Tpt. 1

Tpt. 2

Bsn.

Vla.

Db.

Bass Drum

Perc.

mf

W/CELLO AND FLUTE →

4/4

2/4

3/4

3/4

6:20

6:25?
 NOT SYNCHRONIZED
 ①

Vc.
 Fl.
 B. Cl. 1
 B. Cl. 2
 Tpt. 1
 Tpt. 2
 Bsn.
 Vla.
 Db.
 Perc.
 Bass Drum
 mf
 rubber ball

6:50

3
 vln
 ppp
 vcl
 ppp



16

6:52

Vc.
Fl.
B. Cl. 1
B. Cl. 2
Tpt. 1
Tpt. 2
Bsn.
Vla.
Db.
Perc.

①

②

FL *mf*

③

FL tr.

CL tr. *f*

CL tr. *f*

7:03

④

BS *f*

Vla.

DB

Crotales *bow*

Bsn. *sf*

Perc. 3

7:25

18

4/4

Vc.

Musical notation for Violin 1, measures 1-4.

Musical notation for Violin 1, measures 5-8.

Musical notation for Violin 1, measures 9-12.

Musical notation for Violin 1, measure 13.

Fl.

Musical notation for Flute, measures 1-4.

Musical notation for Flute, measures 5-8.

Musical notation for Flute, measures 9-12.

Musical notation for Flute, measure 13.

B. Cl. 1

Musical notation for Bass Clarinet 1, measures 1-4.

Musical notation for Bass Clarinet 1, measures 5-8.

Musical notation for Bass Clarinet 1, measures 9-12.

Musical notation for Bass Clarinet 1, measure 13.

B. Cl. 2

Musical notation for Bass Clarinet 2, measures 1-4.

Musical notation for Bass Clarinet 2, measures 5-8.

Musical notation for Bass Clarinet 2, measures 9-12.

Musical notation for Bass Clarinet 2, measure 13.

Tpt. 1

Musical notation for Trumpet 1, measures 1-4.

Musical notation for Trumpet 1, measures 5-8.

Musical notation for Trumpet 1, measures 9-12.

Musical notation for Trumpet 1, measure 13.

Musical notation for Trumpet 1, measures 1-4 (second staff).

Musical notation for Trumpet 1, measures 5-8 (second staff).

Musical notation for Trumpet 1, measures 9-12 (second staff).

Musical notation for Trumpet 1, measure 13 (second staff).

Tpt. 2

Musical notation for Trumpet 2, measures 1-4.

Musical notation for Trumpet 2, measures 5-8.

Musical notation for Trumpet 2, measures 9-12.

Musical notation for Trumpet 2, measure 13.

Bsn.

Musical notation for Bassoon, measures 1-4.

Musical notation for Bassoon, measures 5-8.

Musical notation for Bassoon, measures 9-12.

Musical notation for Bassoon, measure 13.

Vla.

Musical notation for Viola, measures 1-4.

Musical notation for Viola, measures 5-8.

Musical notation for Viola, measures 9-12.

Musical notation for Viola, measure 13.

Db.

Musical notation for Double Bass, measures 1-4.

Musical notation for Double Bass, measures 5-8.

Musical notation for Double Bass, measures 9-12.

Musical notation for Double Bass, measure 13.

Perc.

Musical notation for Percussion, measures 1-4.

Musical notation for Percussion, measures 5-8.

Musical notation for Percussion, measures 9-12.

Musical notation for Percussion, measure 13.

Vibraphone
bow - sustain

Fl

3/4

Musical notation for Flute, measure 13.

BS

Musical notation for Bassoon, measure 13.

VIA

Musical notation for Viola, measure 13.

BS

Musical notation for Bassoon, measure 13.

→ 3/4

3
4

Vc. *sfz* *p* *sfz* *p* *sfz* *p*

Fl. *sfz* *p* *sfz* *p* *sfz* *p*

B. Cl. 1 *sfz* *p* *sfz* *p* *sfz* *p*

B. Cl. 2 *sfz* *p* *sfz* *p* *sfz* *p*

Tpt. 1 *sfz* *p* *sfz* *p* *sfz* *p*

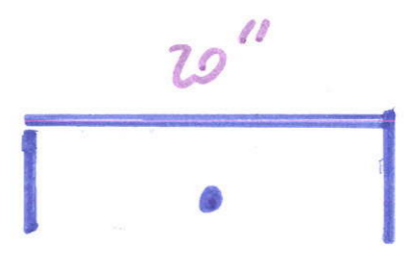
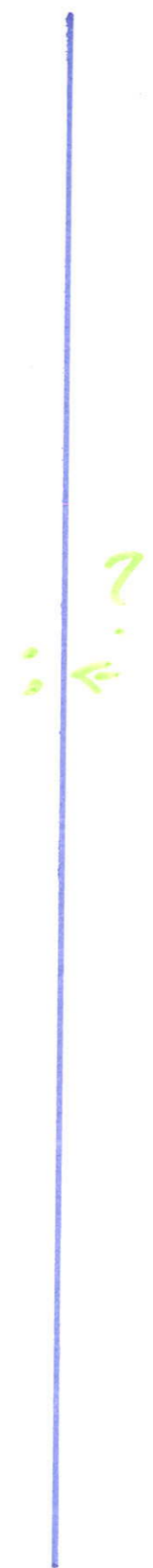
Tpt. 2 *sfz* *p* *sfz* *p* *sfz* *p*

Bsn. *sf* *p* *sf* *p* *sf* *p*

Vla. *p* *p* *p* *p* *p* *p*

Db. *p* *p* *p* *p* *p* *p*

Perc. *sf* *p* *sf* *p* *sf* *p*



ELECTRONICS



8:00

20

Vc. *f*

Fl. *p* tr. *accel.* *rit.*

B. Cl. 1 *CL* low range *mp*

B. Cl. 2 *CL* low range

Tpt. 1 *mute* *TR 1*

Tpt. 2 *mute* *TR 2* *pp*

Bsn. *pp*

Vla. *sf*

Db. *whispy sound* *ppp*

Perc. *Crotales* *bow* *Vibraphone* *bow* *Crotales* *bow* *ppp*

Handwritten annotations: ①, ③, 2, 4, 5, 6, []

(8:16)

(8:25)

(8:32)

3/4

Vc. *f*

Fl. *p* tr. *accel.* *rit.*

B. Cl. 1 low range

B. Cl. 2 low range

Tpt. 1

Tpt. 2

Bsn.

Vla.

Db.

Perc. Crotales Bass Drum Crotales bow Bass Drum

ff

21

sfz

NOT SYNCHRONIZED

[]

[]

22

Vc. *sfz* full tone *p* increasing harmonics added to held note sul pont.

Fl.

B. Cl. 1 *CL1* *pppp* fade across stage

B. Cl. 2 *spz* *pppp*

Tpt. 1 *sfz* mute slowly applied

Tpt. 2 closed mute open x2.5 repeat evenly

Bsn. *sfz* *p* *ppp*

Vla. *vla* *molto vib.* increase sul pont.

Db. *DB* sul pont.

Perc. Bass Drum amplified *sfz* rubber ball *ppp*

8:37. ①

(8:50)

②

③

④

?

9:11

1

Vc. *sfz* full tone *p* increasing harmonics added to held note sul pont.

Fl.

B. Cl. 1 *Cl. 1* *pppp* fade across stage

B. Cl. 2 *spz* *pppp*

Tpt. 1 *sfz* mute slowly applied

Tpt. 2 closed mute open x2.5 repeat evenly

Bsn. *sfz* *p* *ppp*

Vla. *VLA* *molto vib.* increase sul pont.

Db. *DB* sul pont.

Perc. Bass Drum amplified *sfz* rubber ball *ppp*

(1:40)

24

9:30

186

Vc. *pp* full tone sul pont.

Fl. *pp*

B. Cl. 1 *pppp*

B. Cl. 2 *spz* *pppp*

Tpt. 1

Tpt. 2

Bsn.

Vla.

Db. *db* *db*

Perc. rubber ball *ppp*

Vc. *sul pont.*

Fl. *pp*

B. Cl. 1

B. Cl. 2

Tpt. 1

Tpt. 2

Bsn. *pp*

Vla. *VLA* ③ *P*

Db. *DB* ④ *PPP*

Perc. *rubber ball* *PPP*

The image shows a handwritten musical score for a concert band. The staves are labeled on the left: Vc., Fl., B. Cl. 1, B. Cl. 2, Tpt. 1, Tpt. 2, Bsn., Vla., Db., and Perc. The score includes several handwritten annotations in blue and orange ink. At the top left, there is a circled '1' and the time '9:58'. The Vc. staff has a note with 'sul pont.' written above it. The Fl. staff has a note with 'pp' below it. The B. Cl. 2 staff has a circled '2' with a downward arrow pointing to a bar line. The Tpt. 1 staff has a circled '2' above a bar line and the word 'Tpt. 1' written in orange. The Tpt. 2 staff has a circled '2' above a bar line and the word 'Tpt. 2' written in orange. The Bsn. staff has a circled '5' above a bar line and the word 'Bsn.' written in orange. The Vla. staff has a circled '3' above a bar line and the word 'VLA' written in orange. The Db. staff has a circled '4' above a bar line and the word 'DB' written in orange. The Perc. staff has a circled '1' above a bar line and the words 'rubber ball' and 'PPP' written in orange. The score also includes various musical notations such as notes, rests, and dynamic markings like 'pp' and 'PPP'.

10:19

26

Vc.

Fl.

B. Cl. 1

B. Cl. 2

Tpt. 1

Tpt. 2

Bsn.

Vla.

Db.

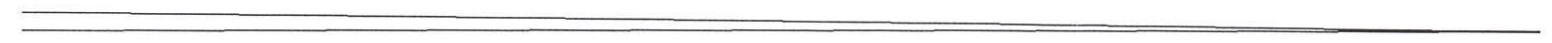
Perc.

1

sul pont.



pp



2

VLA



3

DB



4

DB



5

DB



6

CRDT



Crotales
bow



CRDT

